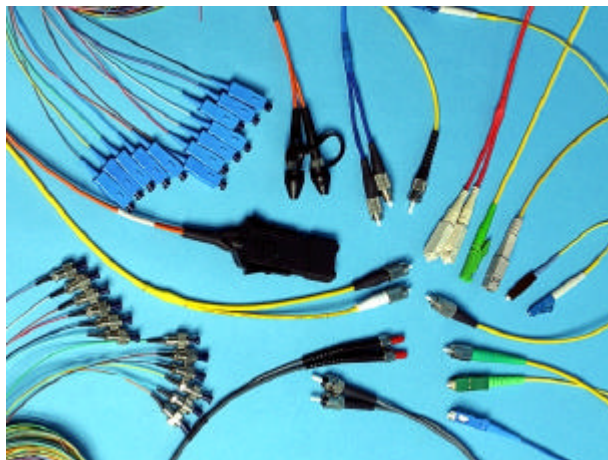


Patchcords & Pigtails

- **Singlemode and Multimode Terminations.**
- **Low Insertion Loss.**
- **Superior Machine Polish.**
- **SPC, UPC and APC Polishes.**
- **100% Test and Inspected.**
- **Termination of Active / Passive Devices.**



Mainframe Communications Limited has a comprehensive automated facility to terminate the majority of fibre optic connectors available, these include:

FC/PC, FC/APC, SC, SC/APC, ST, ST/APC, EC, E2000, ESCON, FDDI/MIC, LC, SMA, MU, MTRJ, DIN.

We have many years of experience, and have developed very high quality fibre termination processes. The fibre termination process is continually monitored to ensure we maintain our renowned high standards. Insertion loss, return loss and fibre end face geometry are checked, and we endeavour to polish to a higher standard than is required by the customer to ensure network performance is not degraded by patchcord connection.

Fibre terminations comply to Telcordia GR-326-CORE for Return Loss, Apex Offset, Radius of Curvature and Ferrule Undercut / Protrusion.

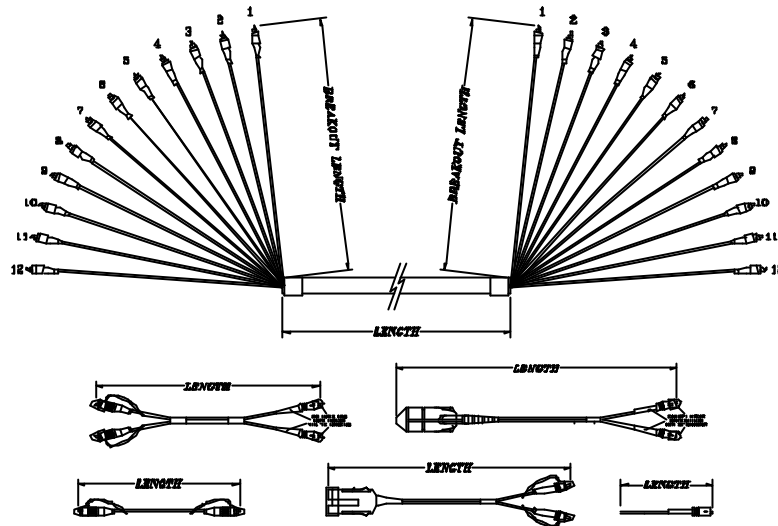
A wide range of fibre connector / cable combinations are available:

- Colour coded buffered fibre pigtail sets, in sets of industry standard 12 fibre colours
- Simplex ruggedised cable from 1.6 mm to 2.8 mm diameter, in a variety of coloured cable sheaths and materials, including LSOH
- Duplex zip cord and Dual (single 3.00 mm sheath) cables
- Breakout Cables: 4, 8, 12, 16, 24 and 36-way as standard, with colour coded 2.00 mm sub units, and yellow outer sheath.
- Pre-Terminated Stub-Tails: Multi-core assemblies terminated one end only ready for installation / splicing or direct connectorisation.

We also offer a full on-site Fibre Termination & Installation service. This includes cable installation / routing, factory quality connector termination & polishing, splicing and testing.

**Fibre
Optic
Prod-**

Schematic Layout



Technical Specifications

Polish Process		Singlemode	Multimode	
Flat	Insertion Loss	N/A	0.10 dB	All loss figures are typical values ST is a registered trademark of AT&T
Super PC	Insertion Loss	0.25 dB	0.10 dB	
	Return Loss	- 45 dB	- 45 dB	
Ultra PC	Insertion Loss	0.25 dB		
	Return Loss	- 53 dB		
8° Angle	Insertion Loss	0.25 dB		
	Return Loss	<- 65 dB		

When ordering the following variations need to be specified

Patchcords: End A - End B - core size - cable type and size - colour - length
 FCFC-9-Z20-YW-3M5
 FC to FC - 9µm (Singlemode) - duplex zip 2 mm OD - yellow - 3.5 metre patchcord

Breakout: End A - End B - core size - cable type - terminated ways - Tail length A - Tail length B - overall length
 FCSC-9-M24-20-1M5-3M-28M0
 FC to SC-9µm (Singlemode) 24-way Internal cable - Terminated 20-ways - 1M FC tails - 3M SC tails - 28 metres overall.

For other combinations please refer to your sales representative.