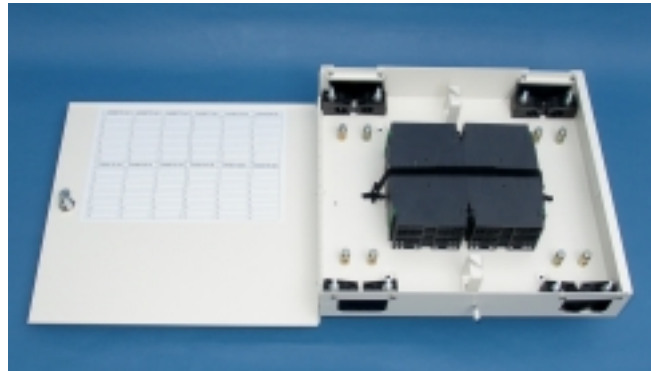


## Building Flexibility Point

- 144 Fibre Capacity
- Up to 12 x 12 way Splice Cassettes
- Up to 8 Cable entry/exit clamps
- Compact
- Smaller 48 way option



Mainframe Communications Limited has produced a versatile Building Flexibility Point, housing up to 144 splices.

The Unit is compact and uncomplicated, and provides the facility of splicing multiple external or internal cables. Up to 8 incoming / outgoing cables can be accommodated, with independent cable clamps as well as cable central strength member clamps.

Fibre tube excess length is managed within cable retention rings which surround the centrally located splice cassettes.

The slice cassettes provide bend radius management of the fibres and include integral splice holders. The cassettes are hinged together for easy splice access.

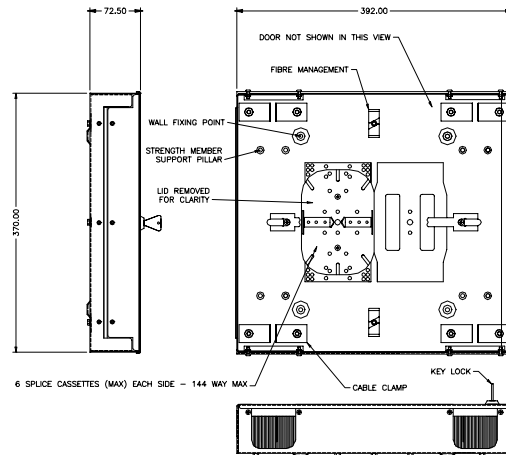
The unit has a single locking door.

A large label plate is located on the inside of the door for identifying fibre splices.

A smaller 48 way maximum capacity unit is available.

**Fibre Optic Products**

## Schematic Layout



## Technical Specifications

**Dimension:** Width 392mm,  
Depth 72.5mm,  
Height 370mm

**Materials:** 1.2mm mild steel

**Finish:** Powder Coated  
RAL 9001 off white

**Capacity:** 144 fibre splices in 12-fibre  
hinged splice cassettes

**Cable Access:** 8 cables max. dia. 20mm  
2 per port via brush strip  
cable apertures.

**Accessories:** Splice cassettes, splice bridges,  
splice support sleeves.

### Additional Products:

ABS enclosures, Splice Cassettes/Bridges, lockable wall box, Termination service, Installation services